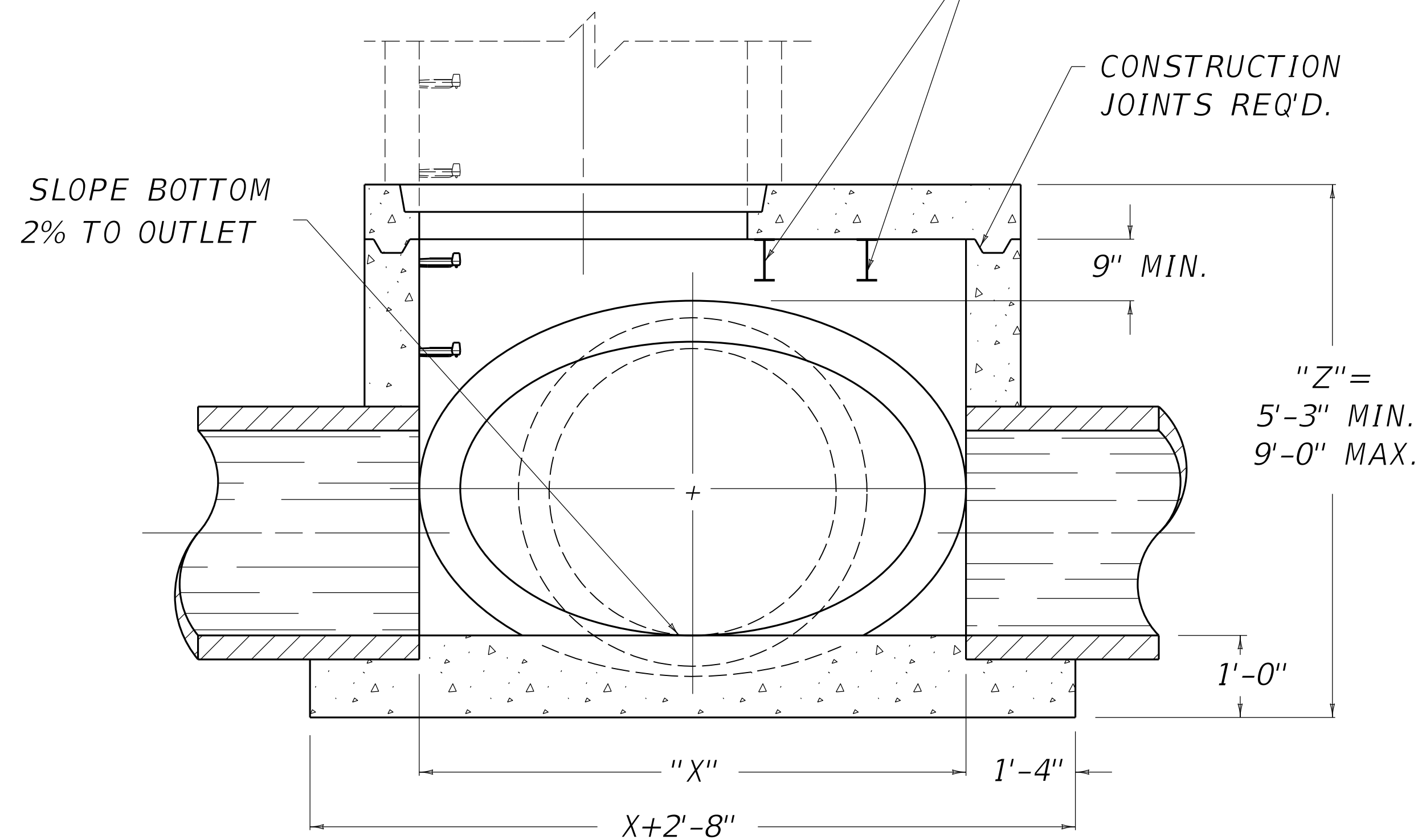


PLAN VIEW

(TWO) GALV. W 6 x 9.0 REQUIRED WHEN X IS OVER 7'-0"
(ONE) GALV. W 6 x 9.0 REQUIRED WHEN X IS OVER 4'-0"
(EXTEND TO WITHIN 3" OF OUTSIDE FACE)

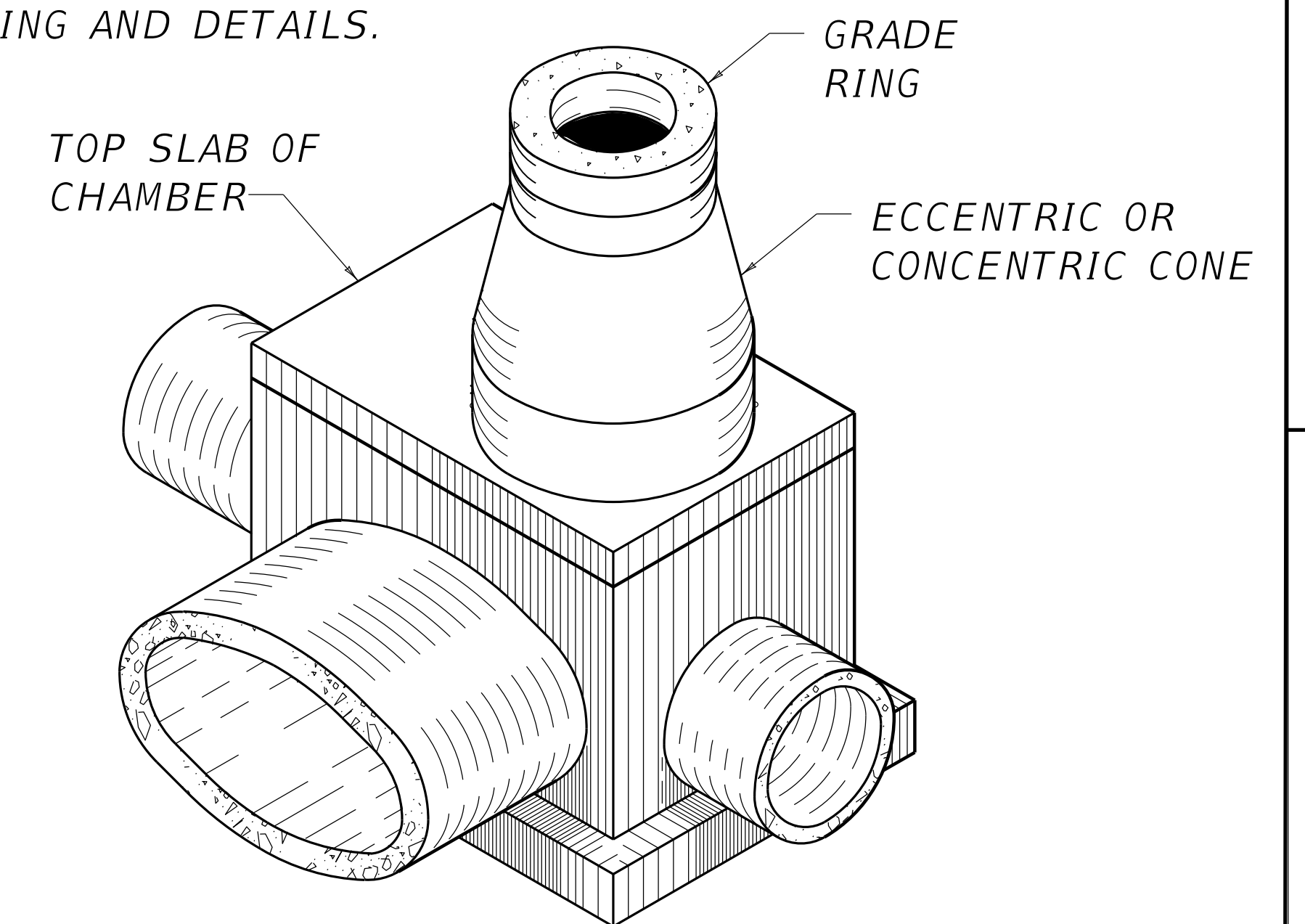


SECTION A-A

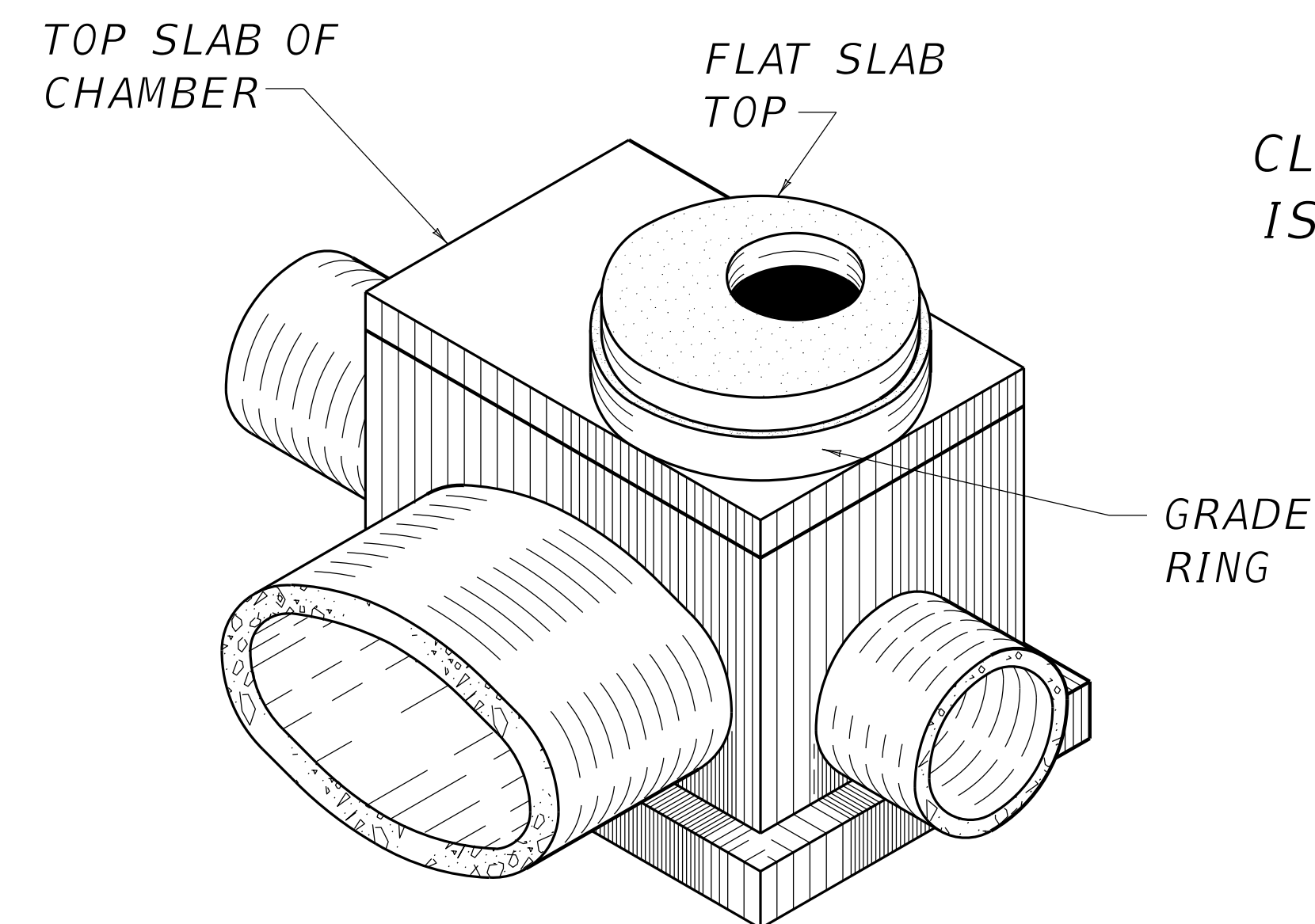
BID ITEM AND UNIT TO BID
MANHOLE TYPE C EACH

1. SEE CUR. STD. DWG. RDM-105 FOR CASTINGS TO BE USED IN TRAFFIC AREAS AND CUR. STD. DWG. RDM-100 FOR CASTINGS TO BE USED IN NON-TRAFFIC AREAS.
2. THE CHAMBER SHALL BE CONSTRUCTED OF CLASS "A" CONCRETE. USE CLASS "A" OR CLASS "B" TOWER AS HEIGHT DICTATES. THE CLASS "A" TOWER MAY BE CONSTRUCTED OF PRECAST CONCRETE PIPE SECTIONS OR CAST-IN -PLACE CONCRETE.
3. REINFORCEMENT USED IN THE CHAMBER SHALL BE REQUIRED WHEN THE MANHOLE HEIGHT EXCEEDS 8'-0".
4. ALL CHAMBER WALLS AND SLABS ARE 8" THICK, EXCEPT WHERE OTHERWISE SHOWN.
5. THE CHAMBER SHALL BE CONSTRUCTED AT RIGHT ANGLES TO THE CENTERLINE OF THE LARGEST INTERCEPTED PIPE.
6. THE CONTRACT UNIT PRICE BID FOR MANHOLE TYPE C SHALL INCLUDE ALL CONCRETE, STEEL REINFORCEMENT, STRUCTURAL STEEL, FRAME AND LID, TOWER, STEPS AND ALL INCIDENTALS NECESSARY TO COMPLETE THE STRUCTURE.
7. FOR CIRCULAR AND ELLIPTICAL PIPE SIZES OF 30" TO 72".
8. SEE CUR. STD. DWG. RDM-055 FOR STEP TYPE, SPACING AND DETAILS.

USE WITH CUR. STD. DWGS.
RDM-011 RDM-012 RDM-013
RDM-055 RDM-100 RDM-105



CLASS "A" TOWER
ISOMETRIC VIEW



CLASS "B" TOWER
ISOMETRIC VIEW

REVISION DATE: 12/01/2015
REVISION NUMBER: 0

SUBMITTED 12-01-2015
DATE

APPROVED 12-01-2015
DATE

DRAINAGE



COMMONWEALTH OF KENTUCKY
DEPARTMENT OF HIGHWAYS



MANHOLE

TYPE C (CHAMBER LAYOUT)

STANDARD DRAWING NUMBER
RDM-010-06